

Christmas Medley

SAX BARITONO

Lorenzo Pusceddu

Allegro moderato (brillante) ♩ = 108-112

"ALLELUJA" (G.F. Haendel)

(brillante)

tutti

"ADESTE FIDELES" (Trad.)

(espressivo)



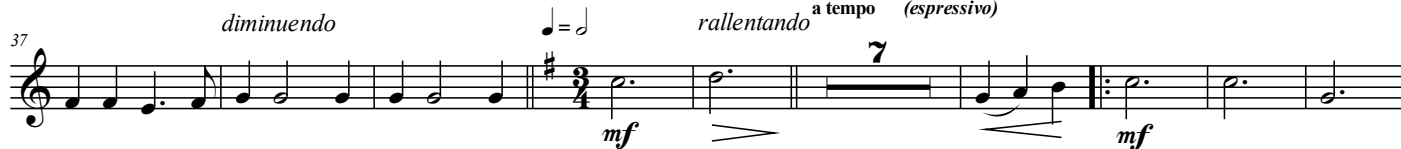
"DECK THE HALLS" (Trad.)

♩ = ♩ (spiritoso)



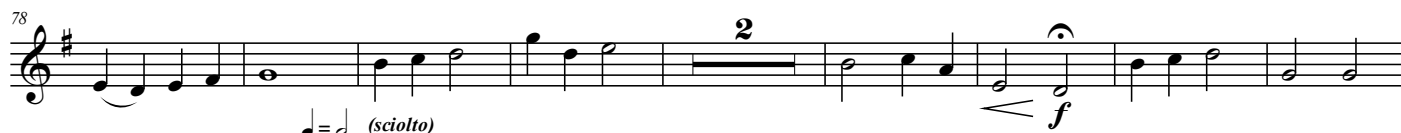
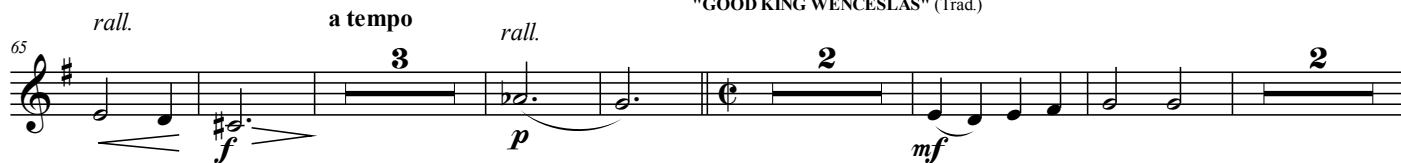
"STILLE NACHT" (F. Gruber)

a tempo (espressivo)



Allegro (spiritoso) ♩ = 128-132

"GOOD KING WENCESLAS" (Trad.)



♩ = ♩ (sciolto)

"GLORIA IN EXCELSIS DEO" (Trad.)



(nobilmente)

"TOCHTER ZION" (G.F. Haendel)



111 *p* *rall.*

119 *f* *Più mosso*
(♩ = 136-140)

127 *mf* *mp* *p* *p* *(espressivo)*
"GREENSLEEVES" (Trad.)
cue: Bass Cl.

140 *mf* *Play*

153 *f* *diminuendo poco rall.*

166 *p* *a tempo*
cue: Bass Cl.

179 *rall.* *a tempo (giocos)* *Play* *f* *p* *"JINGLE BELLS"*
(J. Pierpont)

189 1. 2.

197 *mf*

206

215 *f*

224 1. 2. *rallentando* *ff* *allargando*
Allegro moderato (brillante) ♩ = 108-112
"ALLELUJA" (G.F. Haendel)

232